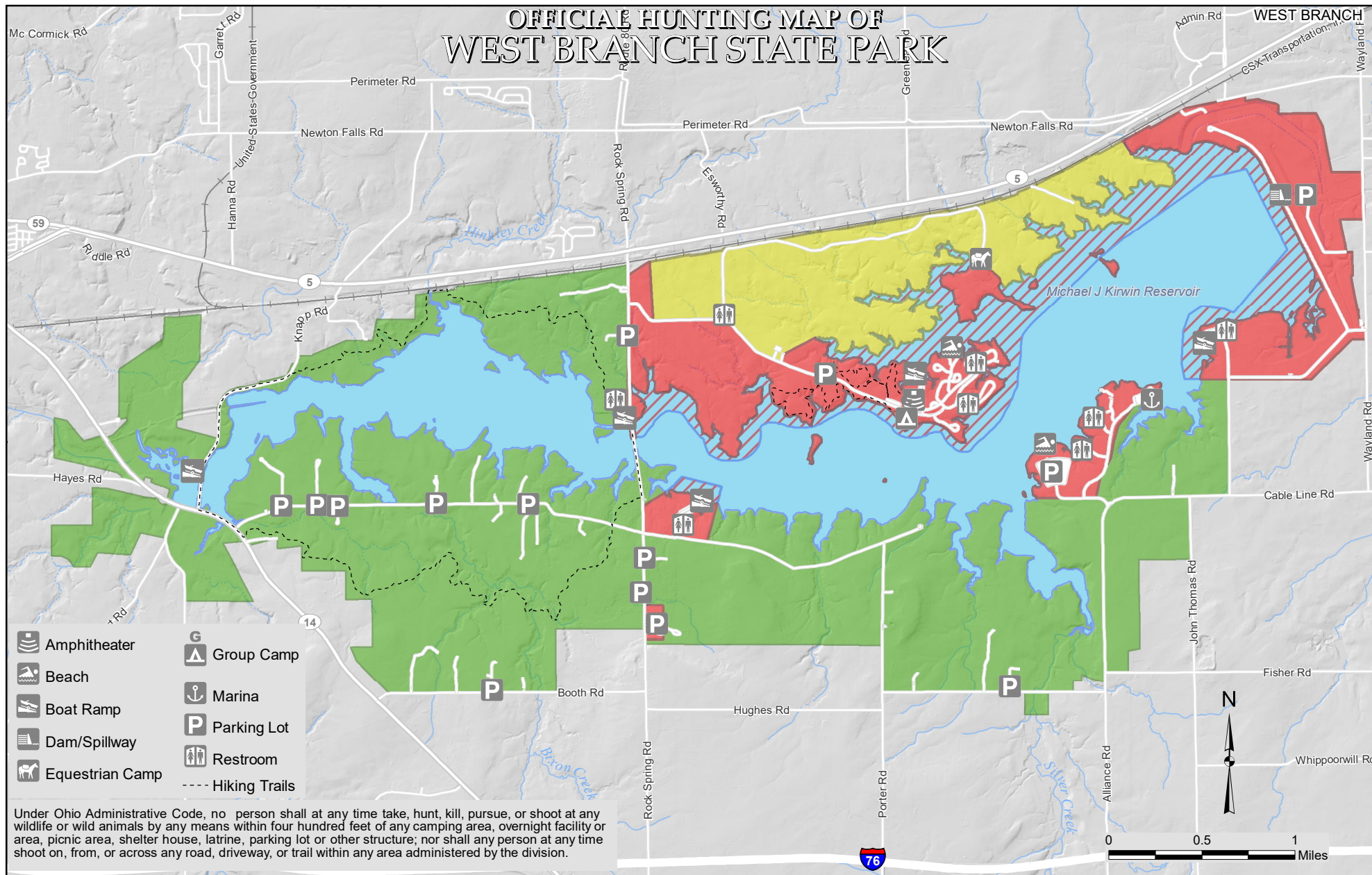


OFFICIAL HUNTING MAP OF WEST BRANCH STATE PARK



- Open to Hunting, Trapping During Season
- Open to Waterfowl Only †
- Closed to Waterfowl Hunting
- Archery Only - November 1st to End of Archery Season.
- Closed to Hunting

† Except for areas that are closer than 400 feet from any structure, parking lot, or trail.

OFFICIAL HUNTING MAP – for hunting and/or trapping of game birds, Game quadrupeds and furbearing animals (Further subject to Wildlife Orders then in effect.)

Dan Colby
Chief, Division of Parks and Recreation

EFFECTIVE DATE: 11/30/19 **DATE POSTED:** 10/31/19

THIS HUNTING MAP IS SUBJECT TO CHANGE. THE CURRENT OFFICIAL HUNTING MAP WILL BE POSTED AT THE PARK OFFICE AT LEAST 30 DAYS IN ADVANCE OF THE EFFECTIVE DATE OF ANY CHANGES.

DISCLAIMER

This product of the Ohio Department of Natural Resources is intended to provide general information only and should not be used for any other purposes. It is not intended for resale or to replace site-specific investigations. These data were compiled by the Ohio Department of Natural Resources, which reserves the publication rights to this material. If these data are used in the compilation of other data sets or maps for distribution or publication, this source must be referenced.

