



## Instructions

We are requesting information for all turtles that are captured. When handling a turtle, use the necessary precautions to prevent harm to yourself or the turtle. A PVC pipe that is 3½ - 4 inch diameter and greater than 20 inches in length can be used to cover the head of a snapping turtle when taking measurements.

### Length Measurement:

Measure the top of the shell (carapace) in inches (in.) using a straight line (do not use a curved measurement). Measure the shell directly over the spine, from the edge of the shell behind the center of the head to the edge directly over the center of the tail.

### Sex determination:

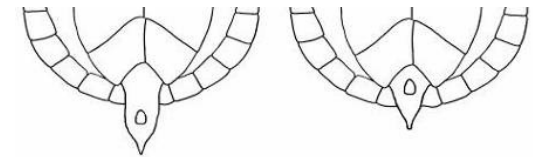
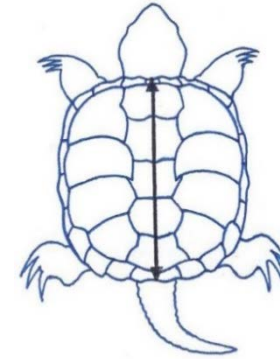
Sex will be recorded as Male "M", Female "F", or Unknown "U". The easiest way to determine the sex of a turtle is by checking the placement of the cloacal opening. To do this, flip the turtle over on its back, and stretch the tail straight out. The cloacal opening of males will be beyond the edge of their shell and will have a thicker tail. The cloacal opening of females will be closer to the base of their tail, not reaching the edge of the shell. If the turtle is immature and its sex cannot be determined, indicate this with "U" for Unknown.

### Harvested:

Record whether each turtle was Harvested: "Y" for yes it was harvested or "N" for No it was not harvested.

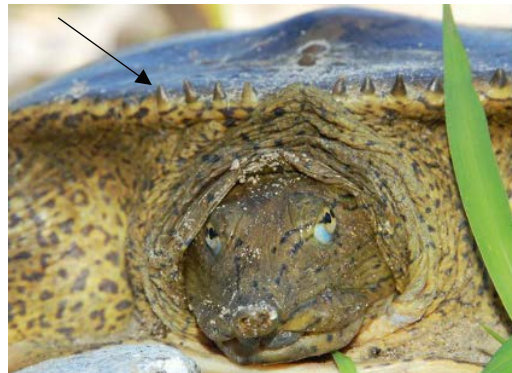
### Comments:

Record any relevant observations (injuries, markings, weight, etc.). If the turtle is weighed, place the turtle in a large pillowcase (if alive) and use a scale to record the weight in pounds (lbs.).



Male

Female



Identification marks for smooth (left; smooth along the front edge) and spiny (right; spiny along the front edge) softshell turtles. Photo credits: Jeff Davis (left) and Greg Lipps (right).

### Turtles found in Ohio's waters

Blanding's turtle – yellow chin, medium size

Common snapping turtle – large size, long tail with bumpy scales

Map turtle – medium size, coloration looks like lines on a road map

Musk turtle – small size, high-domed shell, prominent beak

Painted turtle – small turtle with yellow spot above eye

Red-eared slider – medium sized turtle with "red ear"

Smooth softshell – medium to large size, flat rubbery shell with small dot-like markings and smooth along front edge

Spiny softshell – medium to large size, flat rubbery shell with dark circular spots and spines along the front edge

Spotted turtle – small black turtle with yellow spots