

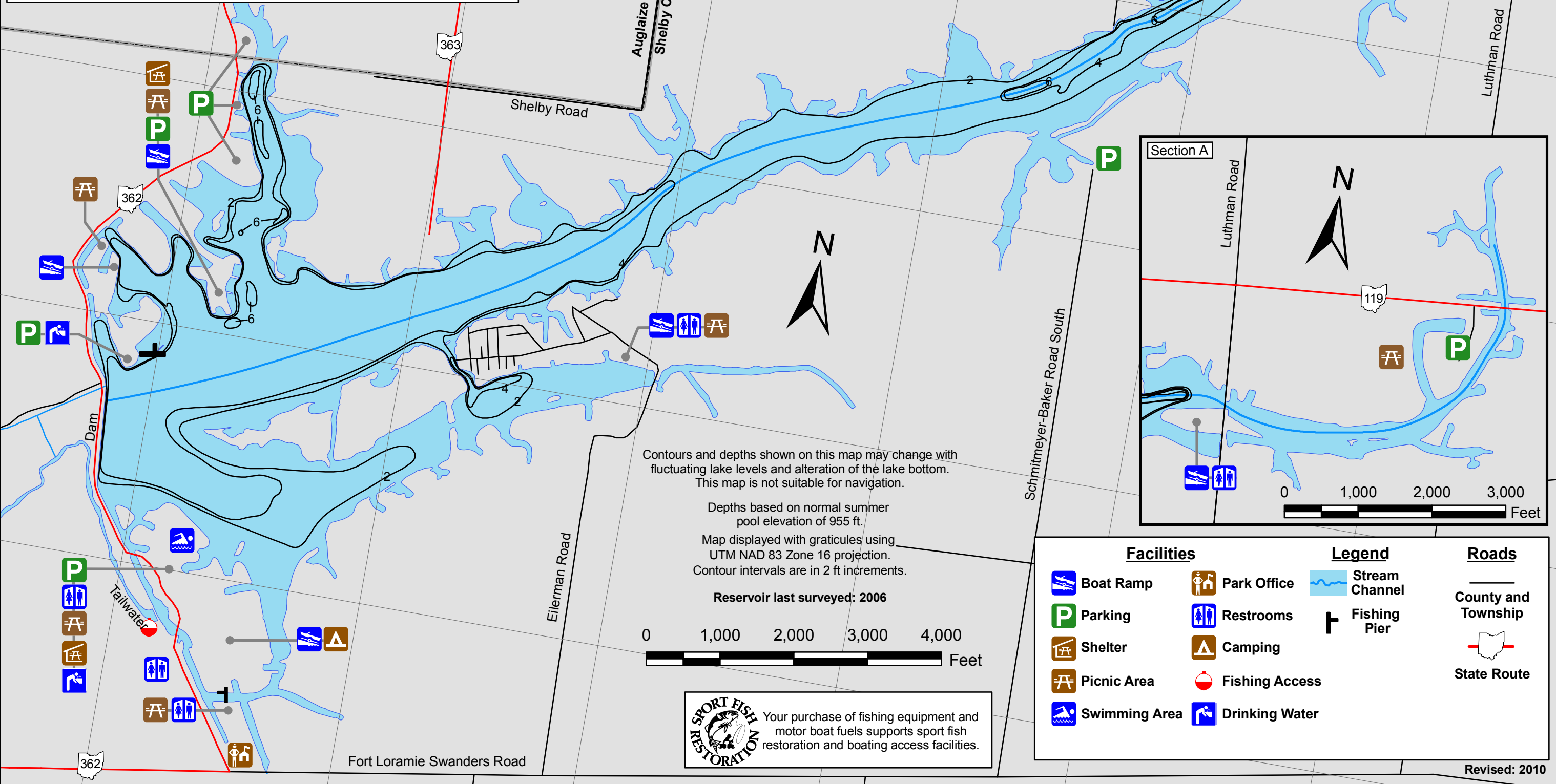
724132.05 4473995.42 725132.05 726132.05 727132.05 728132.05 729132.05

4472995.42
4471995.42
4470995.42



Lake Loramie

Auglaize and Shelby Counties
870 Acres of Water
39 Miles of Shoreline



Contours and depths shown on this map may change with fluctuating lake levels and alteration of the lake bottom. This map is not suitable for navigation.

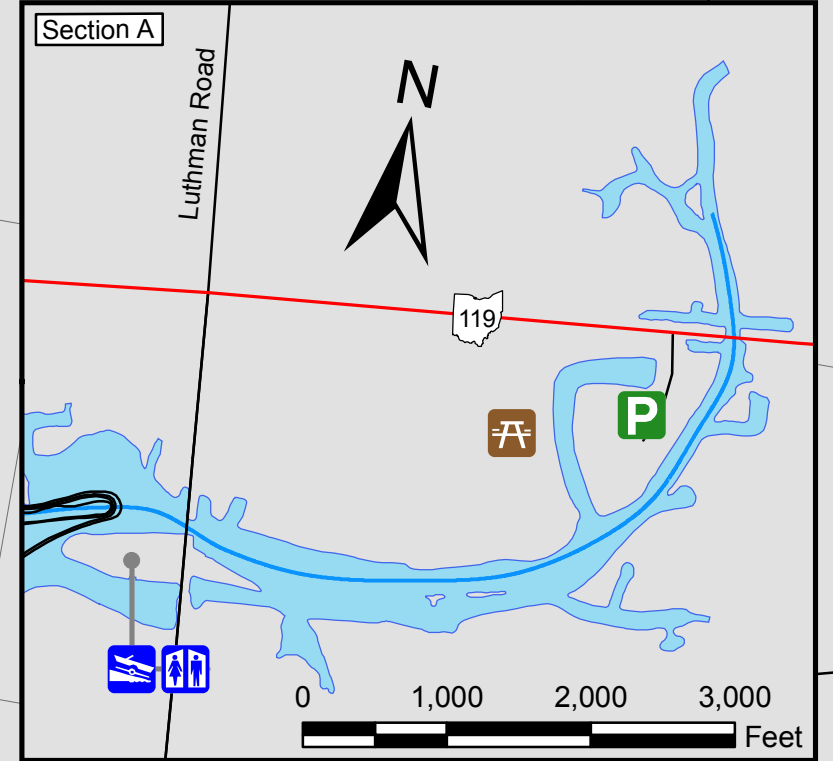
Depths based on normal summer pool elevation of 955 ft.

Map displayed with graticules using UTM NAD 83 Zone 16 projection. Contour intervals are in 2 ft increments.

Reservoir last surveyed: 2006



Your purchase of fishing equipment and motor boat fuels supports sport fish restoration and boating access facilities.



Facilities		Legend	Roads
	Boat Ramp		County and Township
	Parking		State Route
	Shelter		
	Picnic Area		
	Swimming Area		
	Park Office		
	Restrooms		
	Camping		
	Fishing Access		
	Drinking Water		

Revised: 2010

Lake Loramie Fishing Map