

Division of Wildlife  
Ohio Department of Natural Resources  
**NEW LYME WILDLIFE AREA**

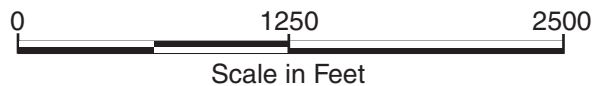
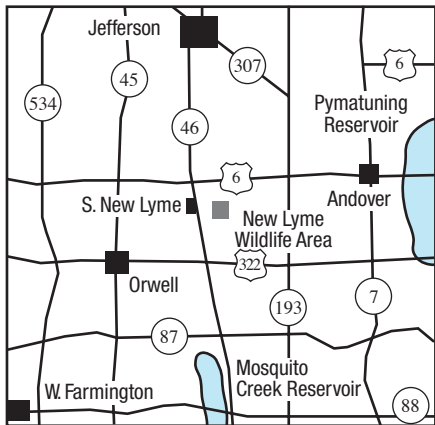


Publication 44  
(R808)

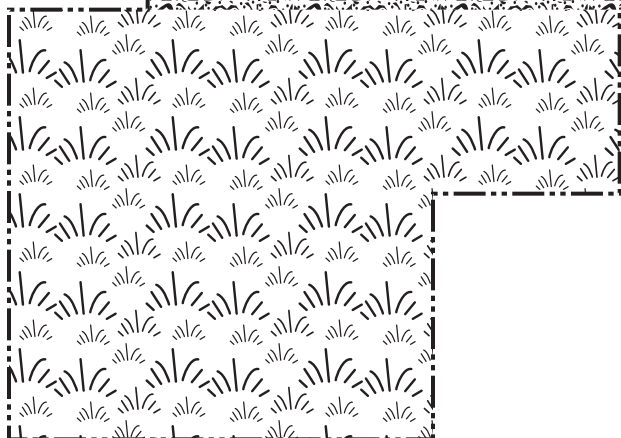
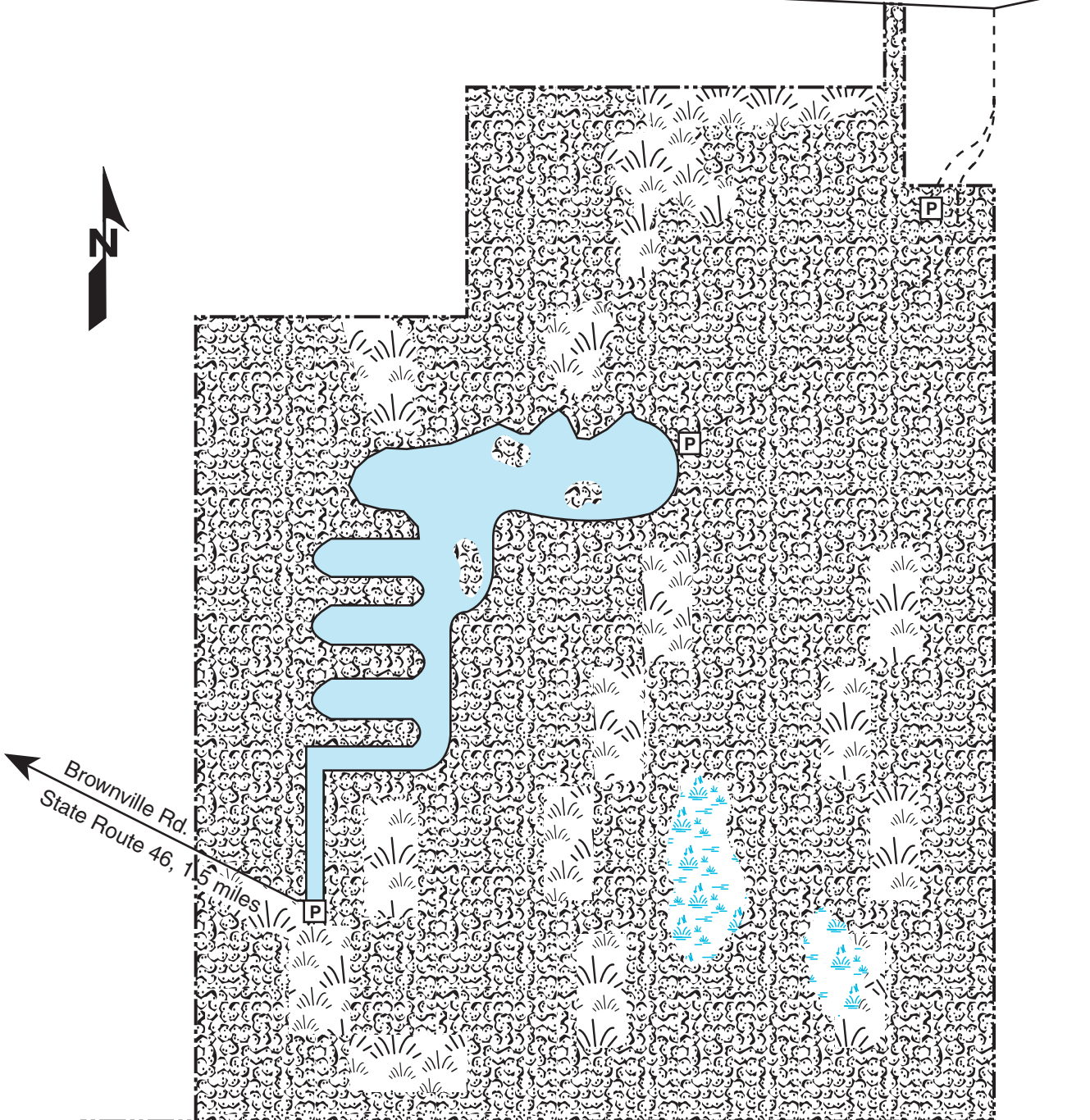
Ashtabula County

Public Hunting & Fishing  
720 Acres

**VICINITY MAP**



State Route 46, 2 miles ← Dodgeville Rd. C-580 U.S. 6, 1 mile Peck Rd.



**LEGEND**

	Parking
	Lake/Pond
	Marshland
	Woodland
	Brushland



# NEW LYME WILDLIFE AREA

## Ashtabula County

### DISTANCE FROM MAJOR POPULATION CENTERS:

- 22 miles from Ashtabula
- 25 miles from Warren
- 40 miles from Youngstown
- 53 miles from Cleveland
- 70 miles from Akron

### LOCATION AND DESCRIPTION

The 720-acre New Lyme Wildlife Area is situated in northeast Ohio, central Ashtabula County, New Lyme Township, two miles east of the town of South New Lyme. Brownville Road dead ends at the western parking lot of New Lyme Wildlife Area. Northern access to New Lyme is two miles east of State Route 46 on Dodgeville Road. The area topography is flat and natural drainage is poorly developed to non-existent. Seventy percent of the area is wooded; the most common species are ash, maple, swamp white oak, pin oak, and red oak. A 54-acre lake was constructed in 1990.

### HISTORY AND PURPOSE

Purchased in 1942, the New Lyme Wildlife Area was used as an experimental ruffed grouse refuge. It was also used to raise snowshoe hares in the '50s. New Lyme was opened to hunting in 1945, and was known then, as it is now, for its fine grouse, deer, squirrel, and woodcock hunting.

### FISH AND WILDLIFE

The fox squirrel is the most abundant game species. Other principal species are white-tailed deer, ruffed grouse, wild turkey, raccoon, and small numbers of cottontail rabbits, beaver and furbearing animals such as mink, skunks, opossum, and muskrat. During waterfowl migration, species found on the area are the wood duck, mallard, scaup, ring-necked duck, and Canada goose. A great variety of both nesting and migrant birds may be found on the area. The 54-acre lake has been stocked with largemouth bass, bluegills, and channel catfish.

### HUNTING, FISHING, AND TRAPPING

The New Lyme Wildlife Area is popular for hunting squirrel, grouse, deer, woodcock, turkey, and some waterfowl. There is limited trapping of muskrat, raccoon, and mink. Fishing for bass, bluegill, and channel catfish is very popular.

### PUBLIC USE FACILITIES

Three parking areas are found on the area. Two parking lots have gravel launch ramps for boat access. Only electric motors may be used on the lake.

### ADDITIONAL INFORMATION

Further information may be obtained from the Area Manager, Mosquito Creek Wildlife Area, 8303 Park Avenue, North Bloomfield, Ohio 44450; telephone (440) 685-4776 or from the Wildlife District Three Office, 912 Portage Lakes Drive, Akron, Ohio 44319; telephone (330) 644-2293.

### TURN IN A POACHER

Ohio's TIP, "Turn In a Poacher," program is helping to curtail poaching throughout the state. TIP is designed to involve the public in reporting wildlife violations. Citizens who observe wildlife violations should call the TIP toll-free hotline, 1-800-POACHER.