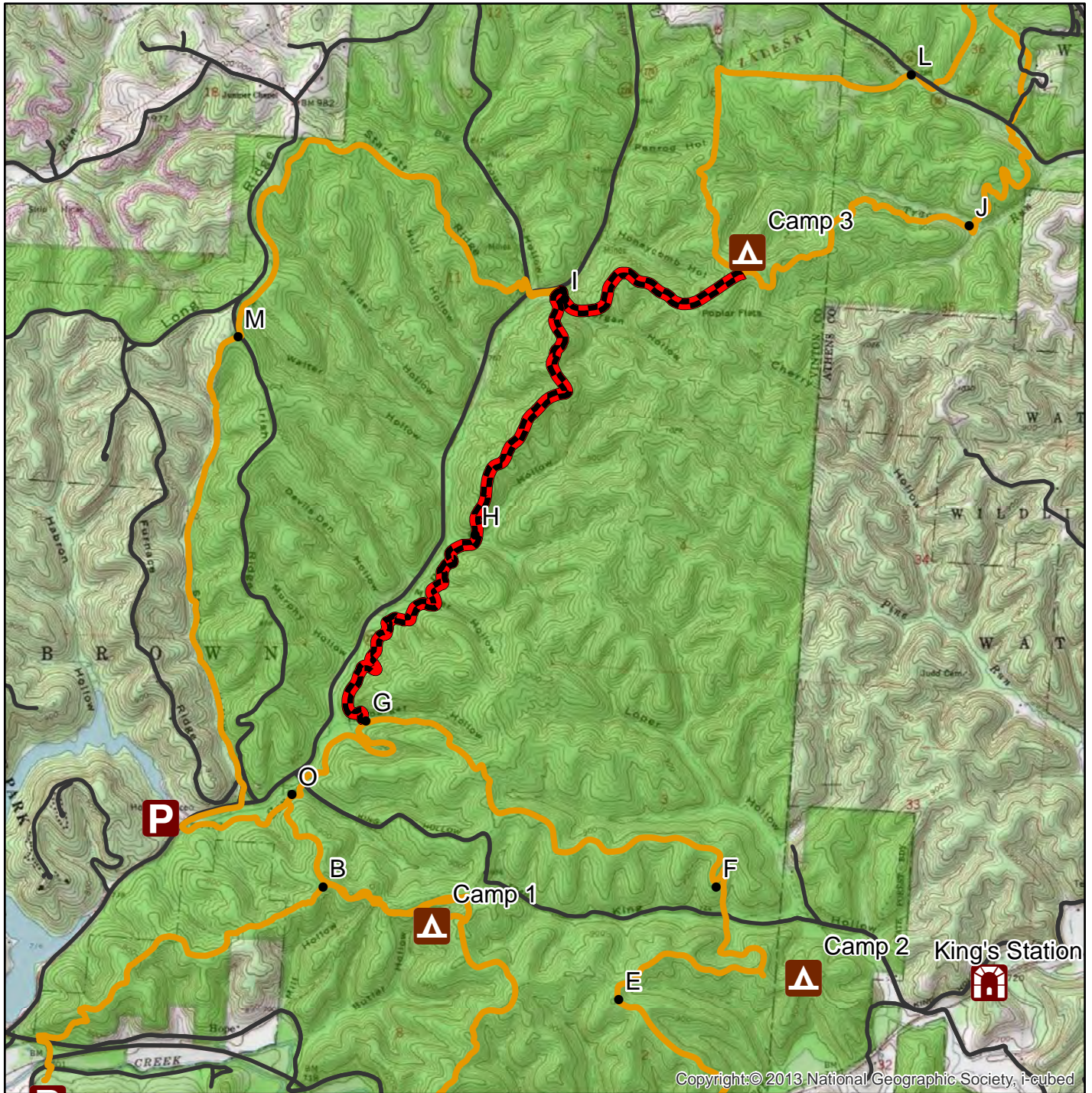


Selinde Roosenburg Memorial Backpack Trail Notice



10/28/2022: A prescribed burn is planned for an area near the backpack trail. See trail closure from Point G to Camp #3. The trail is currently open, but may be closed in the near future. Plan accordingly.



Legend

- Trail Closed
- Public Roads
- Backpack Trail
- State Forest Boundary
- POI
- Camp
- Parking
- Tunnel

0 0.5 1 Miles

